

GEARED MOTOR

AC TORQUE MOTOR



- Manufacture your own access control products
- Only high quality steel and aluminium
- Exported worldwide
- Tried and tested over a period of 20 years



APPLICATIONS

- Vehicle barriers / Boomgates
- Drop arm barriers
- Speedgates
- Bi-folding gates
- Any application requiring a simple, reliable and robust drive solution

KEY FEATURES

- Single phase
- Maintenance free
- Continuous rated torque output
- Robust extruded housing with mounting feet
- Supplied with capacitor (4 μ F capacitor)
- No need for an inverter
- Special high torque version available
- Aluminium link arm for shaft coupling (90mm standard, 80mm and 60mm also available)
- Steel cast link arm for shaft coupling (90mm)

ALSO AVAILABLE

Vehicle barrier / Boomgate controller, mechanism mounting plate, rubber buffers, linkages and springs

MOTOR SPECIFICATIONS

| | |
|-----------------------|--|
| TYPE | AC |
| VOLTAGE | 220V or 110V |
| CURRENT | 15 Amps |
| POWER | 60 Watts Standard / 95 Watts Strong |
| FREQUENCY | 50 Hertz (220V) / 60 Hertz (110V) |
| PHASES | 1 |
| MOUNTING | Foot |
| OPERATING TEMPERATURE | -20°C - +60°C (note – motor operating temperature is 25°C above ambient temperature) |
| IP RATING | 40 |
| ISOLATION CLASS | F100 |

MOTOR CONSTRUCTION

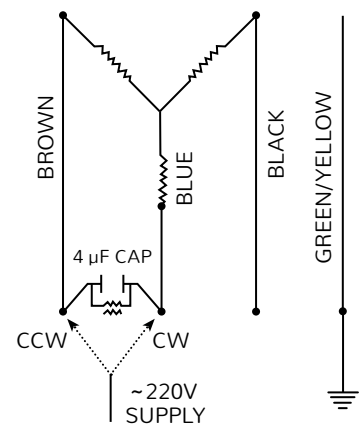
| | |
|----------|---------------------------------|
| HOUSING | Extruded and machined aluminium |
| GEARS | Machined steel |
| BEARINGS | FAG / NSK brand |

DIMENSIONS

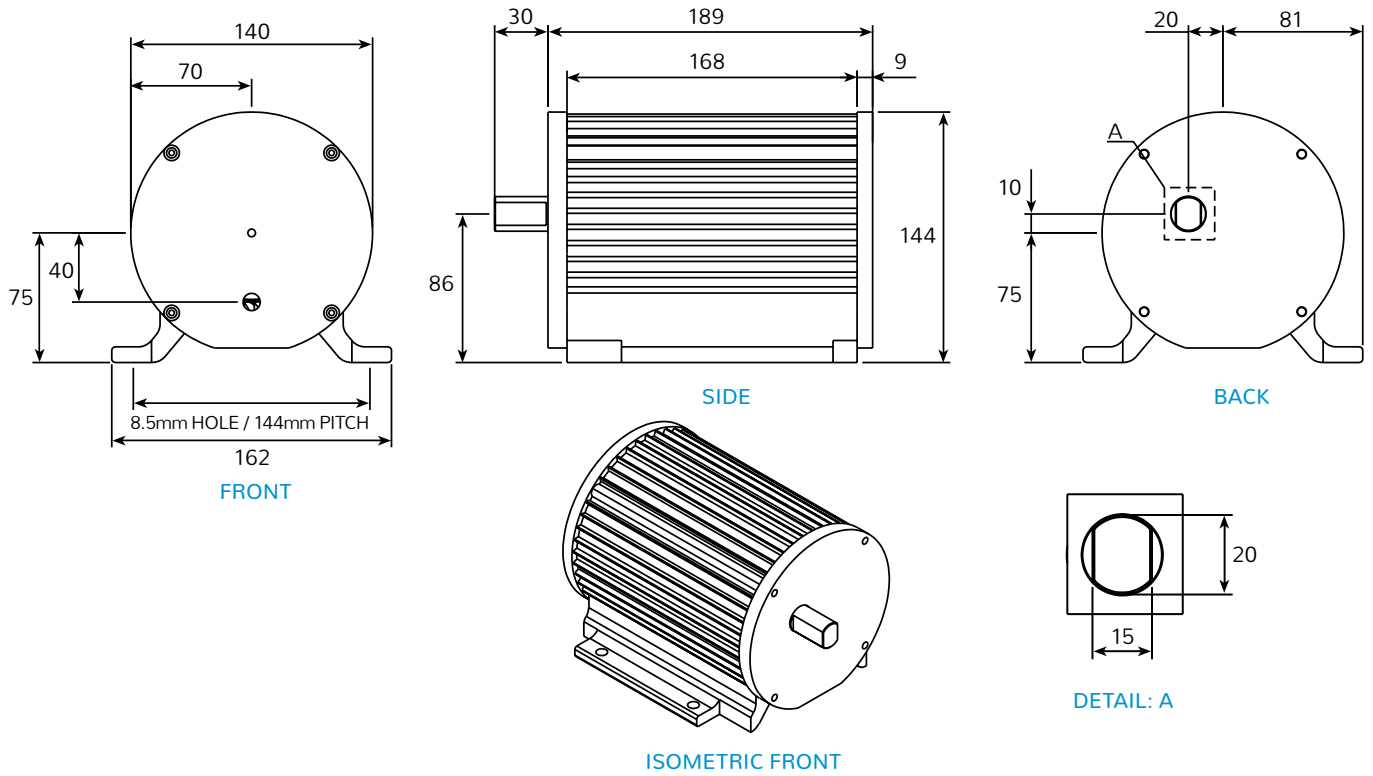
| | |
|-----------------------|----------------------------------|
| LENGTH | 189.0mm (excluding output shaft) |
| SHAFT LENGTH | 30.0mm |
| WIDTH (FOOT MOUNTING) | 162.0mm |
| DIAMETER | 140.0mm |
| HEIGHT | 144.0mm (from base of foot) |
| SHAFT HEIGHT | 85.0mm (from base of foot) |
| WEIGHT | 8.2kg |

| CODE | DESCRIPTION | SPEED | TORQUE |
|---------|----------------------------------|---------|---------|
| BMC0350 | Standard AC torque motor 3.5 rpm | 3.5 rpm | 75 nm |
| BMC0351 | Strong AC torque motor 3.5 rpm | 3.5 rpm | 105 nm |
| BMC0550 | Standard AC torque motor 5.5 rpm | 5.5 rpm | 65 nm |
| BMC0551 | Strong AC torque motor 5.5 rpm | 5.5 rpm | 91 nm |
| BMC0650 | Standard AC torque motor 6.5 rpm | 6.5 rpm | 45 nm |
| BMC0651 | Strong AC torque motor 6.5 rpm | 6.5 rpm | 63 nm |
| BMC0700 | Standard AC torque motor 7 rpm | 7.0 rpm | 34 nm |
| BMC0701 | Strong AC torque motor 7 rpm | 7.0 rpm | 47 nm |
| BMC0750 | Standard AC torque motor 7.5 rpm | 7.5 rpm | 30 nm |
| BMC0751 | Strong AC torque motor 7.5 rpm | 7.5 rpm | 48 nm |
| BMC0100 | Standard AC torque motor 10 rpm | 10 rpm | 24 nm |
| BMC0101 | Strong AC torque motor 10 rpm | 10 rpm | 33 nm |
| BMC0140 | Standard AC torque motor 14 rpm | 14 rpm | 18 nm |
| BMC0141 | Strong AC torque motor 14 rpm | 14 rpm | 25 nm |
| BMC0180 | Standard AC torque motor 18 rpm | 18 rpm | 12.5 nm |
| BMC0181 | Strong AC torque motor 18 rpm | 18 rpm | 17.5 nm |
| BMC023 | Standard AC torque motor 23 rpm | 23 rpm | 10 nm |
| BMC0231 | Strong AC torque motor 23 rpm | 23 rpm | 14 nm |
| BMC0300 | Standard AC torque motor 30 rpm | 30 rpm | 5 nm |
| BMC0301 | Strong AC torque motor 30 rpm | 30 rpm | 7 nm |
| BMC0350 | Standard AC torque motor 35 rpm | 35 rpm | 15 nm |
| BMC0351 | Strong AC torque motor 35 rpm | 35 rpm | 21 nm |

WIRING DIAGRAM 220V VERSION



AC TORQUE MOTOR



© Turnstar Systems

ACCESSORIES FOR TORQUE MOTOR

1. CAPACITOR

Supplied as standard with the motor (4 µF capacitor, 5 and 6 µF available on request)

2. LINK ARM

Aluminium link arm for shaft coupling (90mm standard, 80mm and 60mm also available)
 Steel cast link arm for shaft coupling (90mm)

3. RUBBER BUFFER

M10 rubber buffer for up and down limits

4. CONTROLLER FOR A VEHICLE BARRIER / BOOMGATE: BL100BT LOGIC AND LOOP DETECTOR

See separate brochure for the the BL100BT combined logic and loop detector



info@turnstar.co.za | www.turnstar.co.za

Turnstar Systems (Pty) Ltd | Reg No: 2012/100536/07 | Established in 1990

JHB FACTORY
 18 6th Street, Wynberg,
 Sandton, 2090
 T: +27 (0)11 786 1633
 F: +27 (0)11 440 5839

CAPE BRANCH
 Unit 9 Elect Park,
 13 Teejay Road, Brackenfell,
 Cape Town, 7560
 T: +27 (0)21 981 3043

KZN BRANCH
 Unit 5 - 7 Amatuli Industrial Park,
 5 - 7 Eagle Road, Shaka's Head,
 Umhlali, Kwazulu-Natal, 4420
 T: +27 (0)32 947 0391

POSTAL ADDRESS
 PO Box 41,
 Highlands North,
 2037

