



RELIABLE ★ DURABLE ★ GUARANTEED

POLES & BRACKETS



GENERAL INFORMATION ON POLES

All poles come in recess 1000mm design, or surface mount design with base plate.
Standard pole heights from 3000mm up.

Mild Steel Composition: 0.05% to 0.25% carbon, with negligible amounts of chromium and nickel. Cost-Effective: More affordable than stainless steel; often used in budget-sensitive projects. Coating Requirements: Needs protective coatings (like galvanization) to prevent rust. Robustness: Strong enough to support heavy solar panel arrays. Maintenance: Requires regular upkeep to prevent corrosion.	304 Stainless Steel Composition: 18% chromium, 8% nickel, and up to 0.08% carbon. Durability: Good corrosion resistance makes it suitable for outdoor installations. Weight: Lightweight, which facilitates easier installation. Finish: Can be polished for aesthetic appeal. Corrosion Resistance: Performs well in moderate moisture environments. Cost-Effectiveness: Affordable while offering adequate durability.	316 Stainless Steel Composition: 16% chromium, 10% nickel, 2% molybdenum, and up to 0.08% carbon. Superior Corrosion Resistance: Ideal for coastal areas and high humidity environments. Longevity: Enhanced rust resistance leads to lower maintenance costs. Marine Environments: Excellent for installations near the ocean or in saline conditions. Strength: Maintains integrity in harsh weather.	3CR12 Stainless Steel Low-cost, utility-grade ferritic stainless steel developed as an alternative to carbon steel with improved corrosion resistance. It contains 12% chromium and has good weldability, moderate strength, and high toughness. 3CR12 is commonly used in structural applications, mining, transportation, and industrial environments where mild corrosion resistance is required. It is less corrosion-resistant than austenitic stainless steels but performs well in mildly corrosive conditions..
--	---	--	---

Round Tube
88,9mm Diameter 2 - 5mm Wall Thickness
101,6mm Diameter 3mm – 6mm Wall Thickness
127mm Diameter 3mm – 6mm Wall Thickness
152mm Diameter 3mm – 6mm Wall Thickness

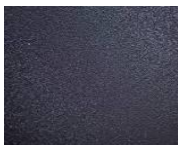
Square Tube
75mm x 75mm 2mm Wall Thickness
100mm x 100mm 3mm – 6mm Wall Thickness
120mm x 120mm 3mm – 6mm Wall Thickness
152mm x 152mm 3mm – 6mm Wall Thickness

MATERIAL FINISHES

STAINLESS STEEL



POWDER COATED



GALVANISED



PLASTIC COATED



PLASTIC COATING

What is Plastic Coating?

Plastic Coating is a thermoplastic coating specifically designed to provide a longer-lasting, durable coating for exterior applications. The Plastic Coating is resistant to cracking, detergents, adverse weather conditions, salt spray and the most typical airborne pollutants. The Plastic Coating product used has achieved “Test Certification” under the specifications of the “ISO 12944-6 Paints and varnishes” – Corrosions protection of steel structures by: Protective paint systems – Part 6: “Laboratory performance test”.

Key Features:

- Superior resistance to salt, and sun
- Excellent abrasion protection
- High flexibility
- Excellent environmental credentials: no bisphenol A (BPA free), no VOC's, no TGIC, no phthalates, no isocyanates, no halogens and no heavy metals
- Sound insulation
- Excellent coverage of edges and welds
- Very low smoke in event of fire

Benefits:

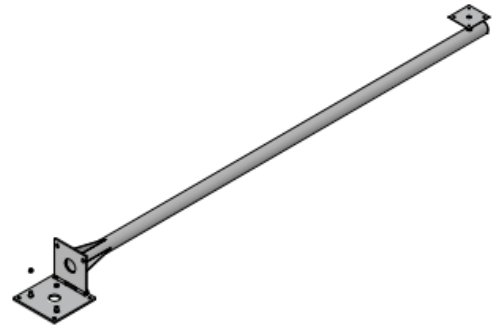
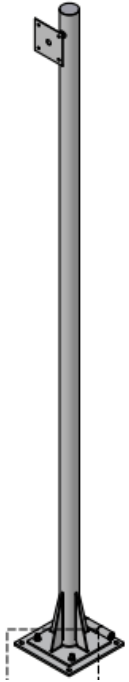
- Highly durable: how extreme weatherability might be, Plascoat provides long life for the coated assets
- Highly economical: no primer required, no maintenance during the product life
- Safe and dependable: easy to clean surface with a warm – touch effect
- Is unaffected by salt spray, stone chips and temperature extremes
- Universal and versatile
- Relies on almost 30 years proven performance

Used in wide array of application:

- Fencing
- Outdoor furniture
- Construction
- Automotive

BUDGET POLES

HEIGHTS FROM - 3000MM TO 6000MM
ROUND OR SQUARE TUBE
COMES STANDARD WITH ONE CAMERA MOUNT



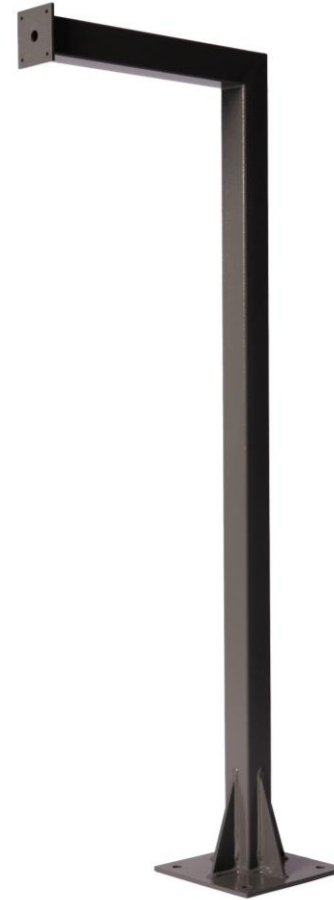
BUDGET CAMERA POLE
HINGED



BOLT CAGE



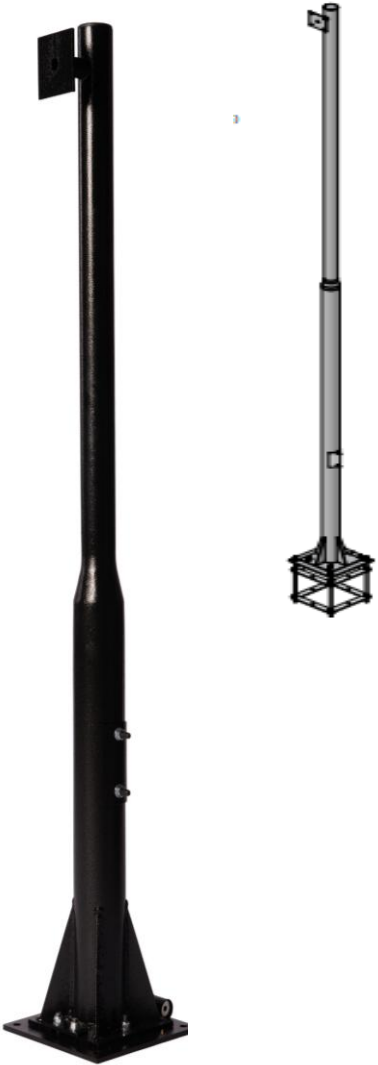
BUDGET CAMERA POLE
FIXED



BUDGET UL POLE PERIMETER
POLE



STANDARD FIXED REDUCED POLE HINGED



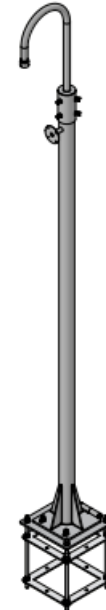
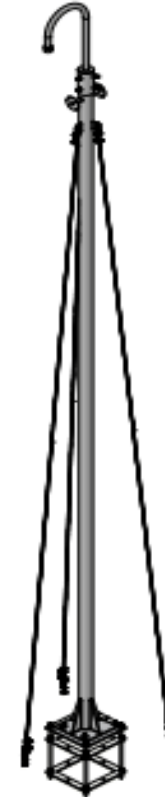
HEIGHT FROM - 3000MM-8000MM
VERSATILE CAMERA POLE
COMES STANDARD WITH ONE
CAMERA MOUNTING PLATE .
YOU CAN ADD A CANDYSTICK FOR
PTZ CAMERA.
CABLESTAYS FOR STABILITY FROM 6M
UP FOR PTZ STABILITY.



CANDY-STICK POLE HINGED



HEIGHT - 3000MM-8000MM
COMES STANDARD WITH CANDY
STICK FOR PTZ CAMERA AND 1
CAMERA MOUNTING PLATE.
CABLE STAYS FROM 6M AND UP FOR
PTZ STABILITY.



SOLAR POLE HINGED



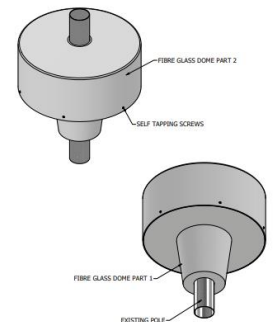
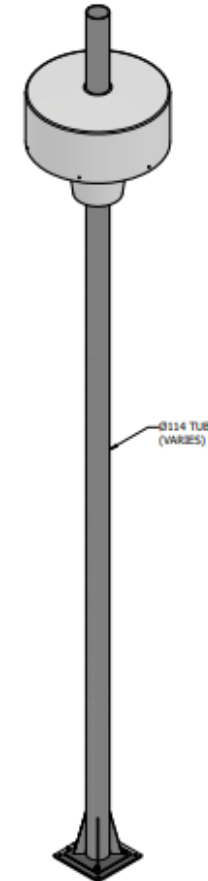
HEIGHT - 3000MM-8000MM
SOLAR BRACKET 360 DEGREE
ROTATION TO HOUSE UP TO TWO
SOLAR PANELS
COMES STANDARD WITH ONE
CAMERA MOUNT
CABLE STAYS FROM 6M AND UP



CCTV ROAD POST HINGED



HEIGHT - 3000MM-9000MM
COMES WITH FIBRE GLASS DOME
COMES STANDARD WITH ONE
CAMERA MOUNT



POWER POLE HINGED



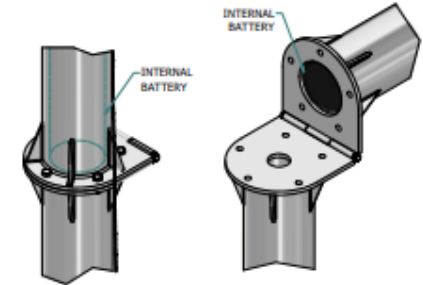
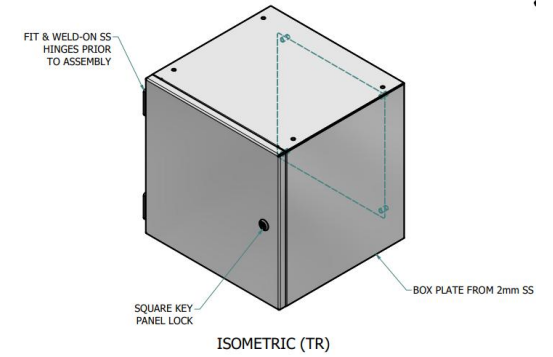
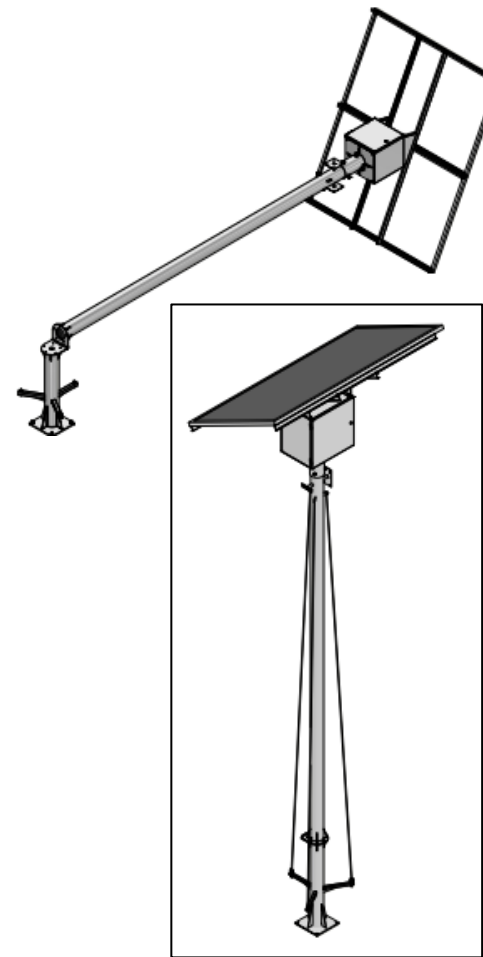
HEIGHT - 3000MM-8000MM
SOLAR BRACKET 360 DEGREE
ROTATION
BIRD BOX 450X450X400MM
COMES STANDARD WITH ONE
CAMERA MOUNT
CABLE STAYS FROM 6M AND UP



SMALL PACK 50W
12V105amp Battery
MPPT 75/15
Inverter 12/500
Solar Panel 550w

MEDIUM PACK 100W
24V105amp Battery
MPPT 100/20
Inverter 24/500
Solar Panel 595w

LARGE PACK 150W
25.6V105amp Battery
MPPT 100/50
Inverter 24/500
Solar Panel 550w



CANTILEVER POLE HINGED



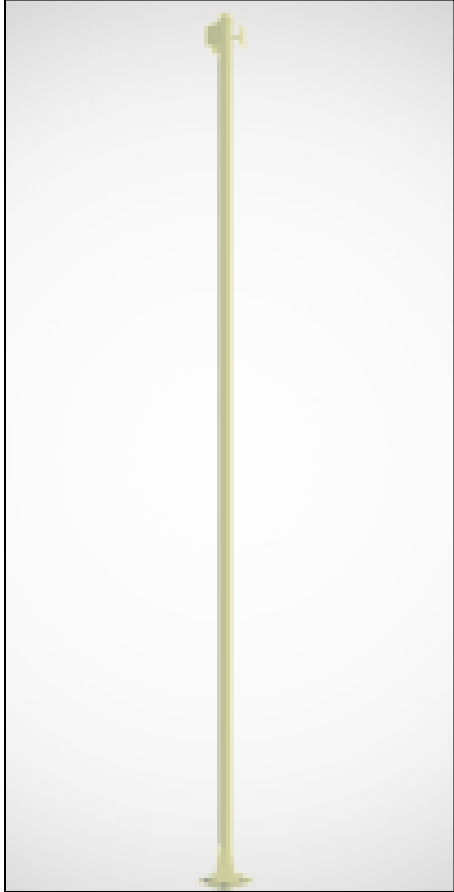
HEIGHT - 8000MM- 18000MM
CANDY STICK FOR PTZ CAMERA
COMES STANDARD WITH ONE
CAMERA MOUNT.
CABLE STAYS
2500KG ELECTRICAL 12V WINCH

CANDY-SOLAR POLE HINGED



HEIGHT - 8000MM - 18000MM
CANDY STICK FOR PTZ CAMERA
UP TO 2 SOLAR BRACKETS FOR
550W PANEL
BIRD BOX 450X450X400MM
CABLE STAYS
2500KG ELECTRICAL 12V WINCH

FIBRE GLASS POLES HINGED



HEIGHT - 3000MM-6000MM
CAMERA ONLY POLE
HINGED BASE
COMES STD WITH ONE
CAMARA MOUNT

LOW COST POLES



STRAIGHT CAMERA
POLE

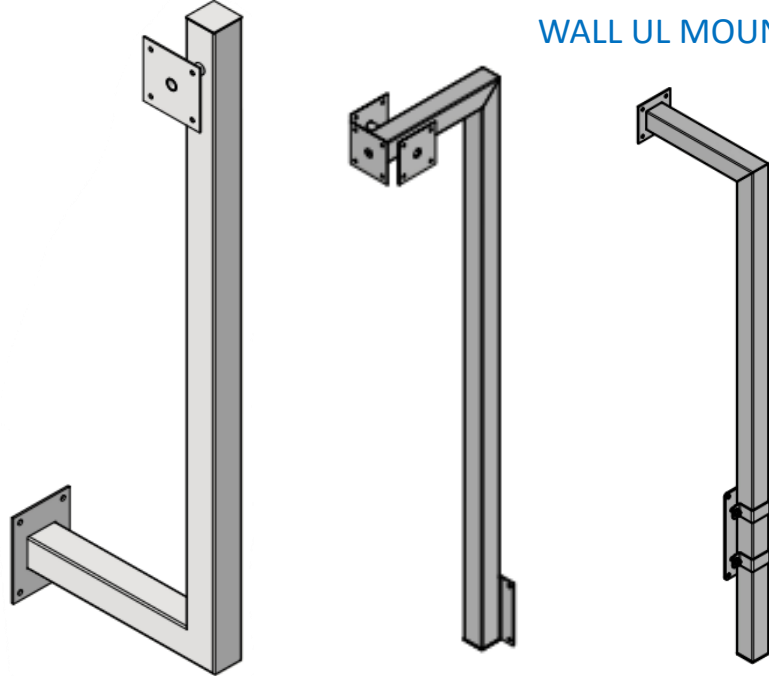


UL PERIMETER CAMERA
POLE

HEIGHT - 3000MM-6000MM
DIAMETER – 50MM – 60,3MM
WALL THICKNESS 2MM
UP TO TWO CAMARA MOUNTS
NOT SUITABLE FOR HIGH
WIND CONDITIONS

WALL MOUNTS

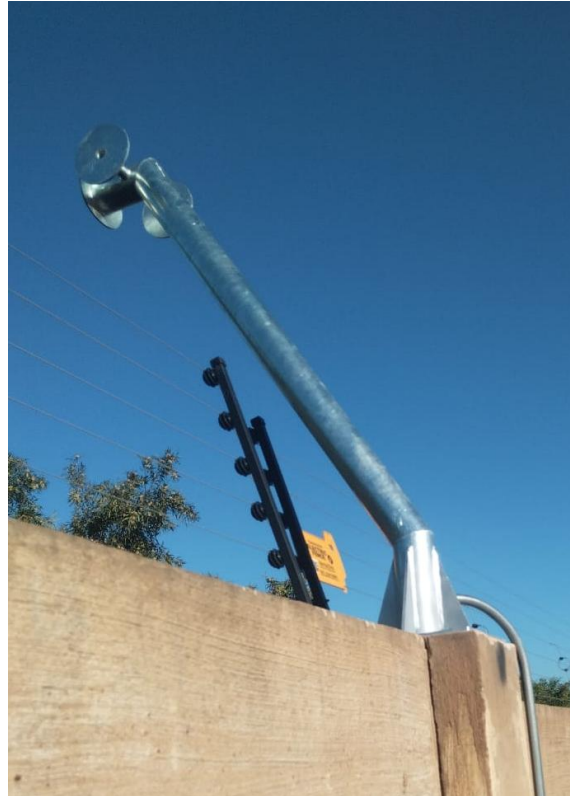
WALL UL MOUNT



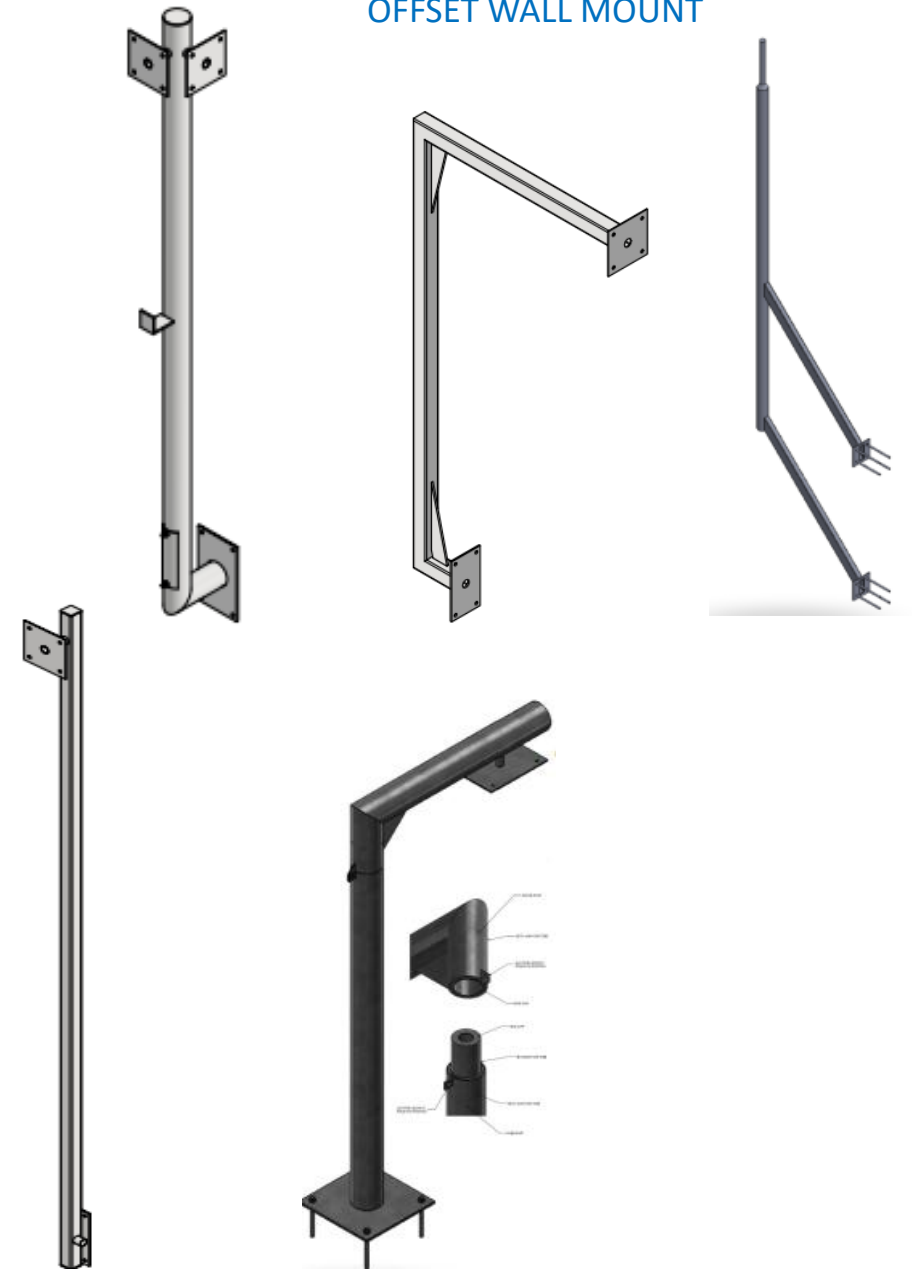
ADJUSTABLE WALL MOUNT



FIXED WALL MOUNT



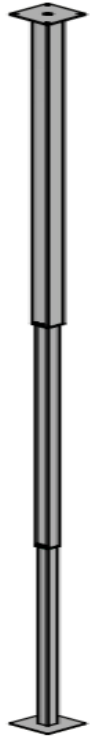
OFFSET WALL MOUNT



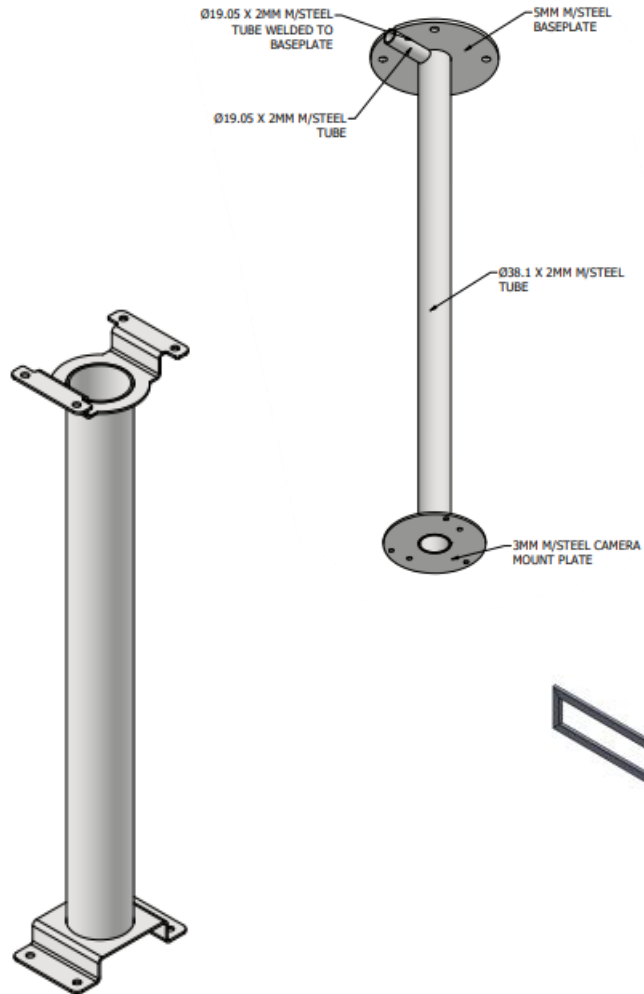
SWIVEL MOUNT



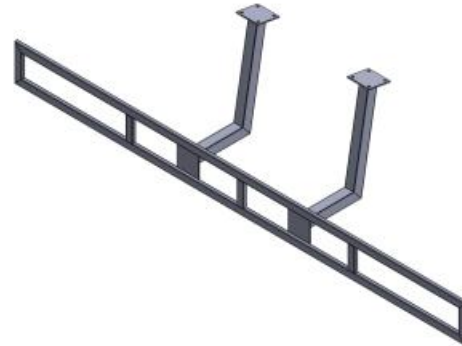
CEILING MOUNTS



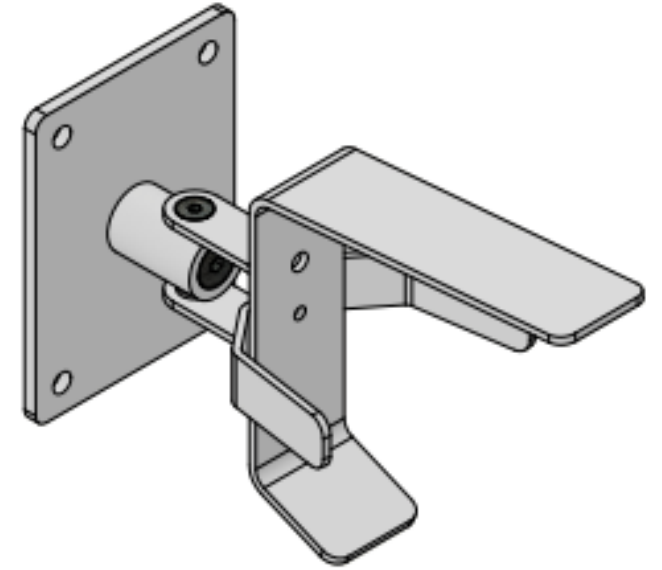
TELESCOPIC CEILING
MOUNT



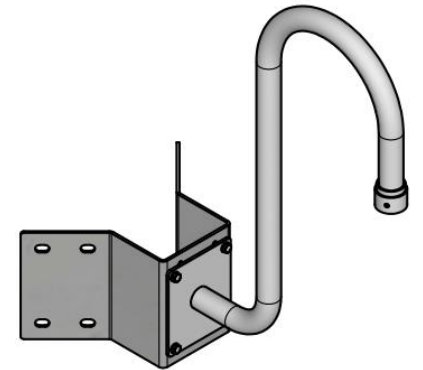
SCREEN BRACKET



SWIVEL MOUNTS



CORNER MOUNTS



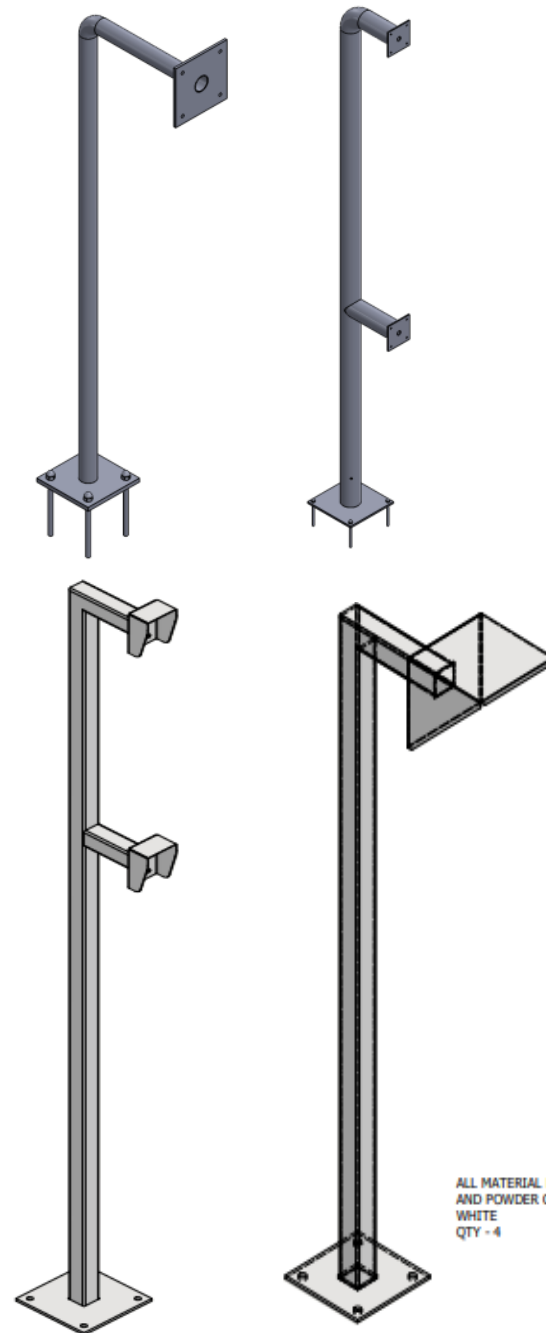
GOOSENECKS



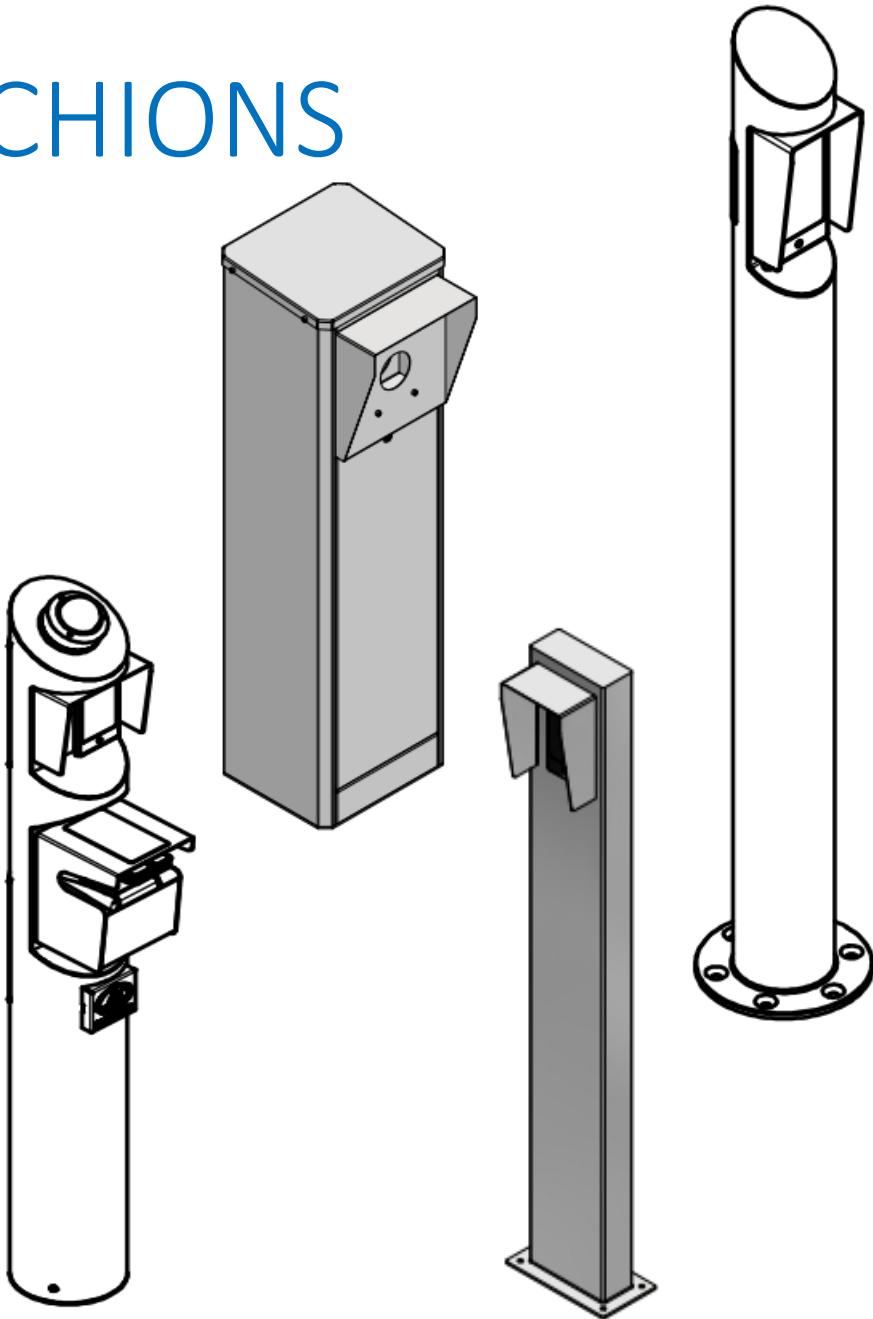
SINGLE DOUBLE WITH RAIN SHIELD



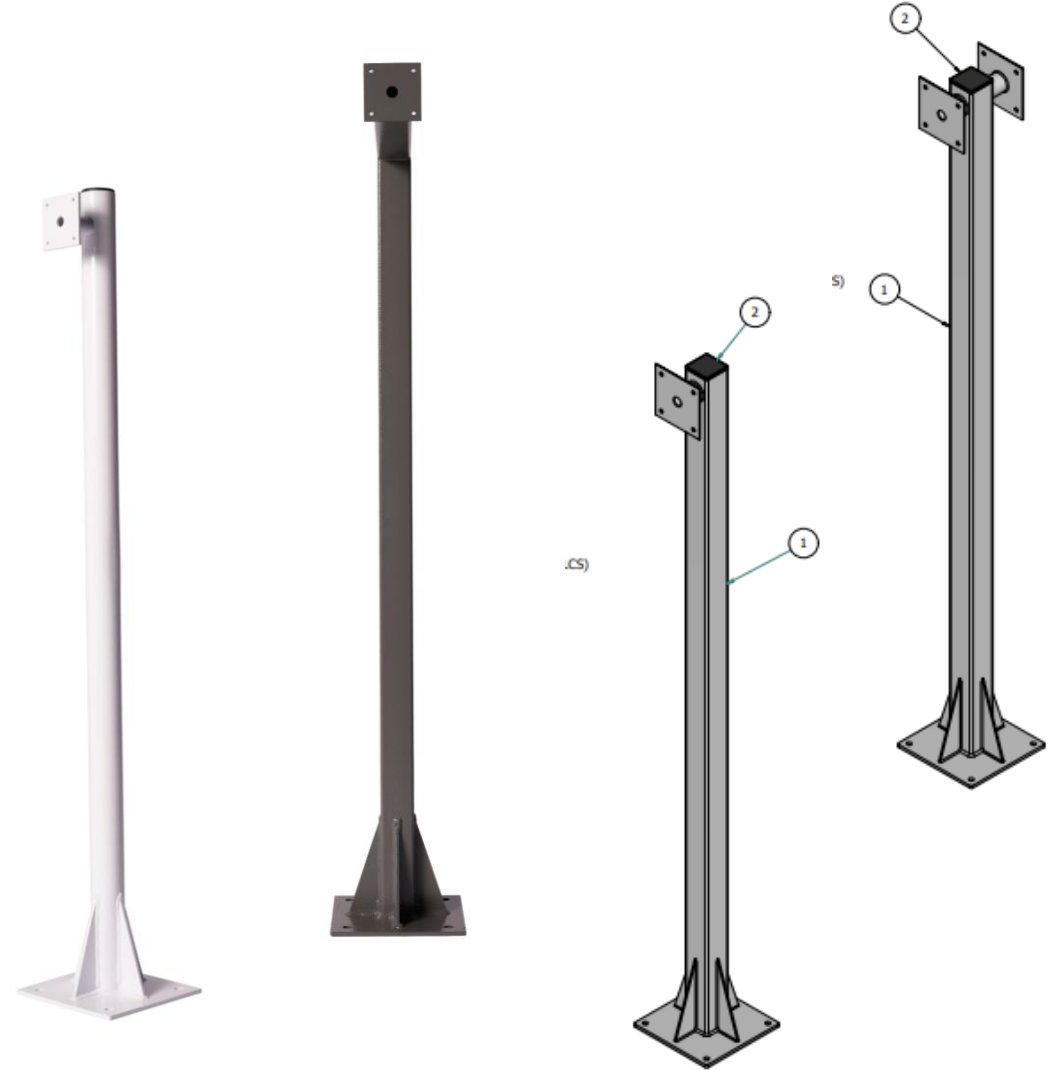
SINGLE DOUBLE NO RAIN SHIELD



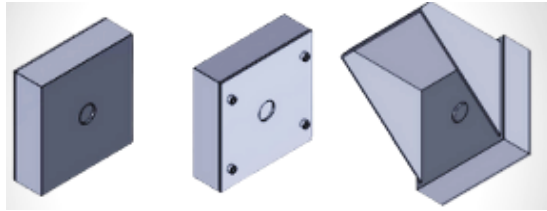
STANCHIONS



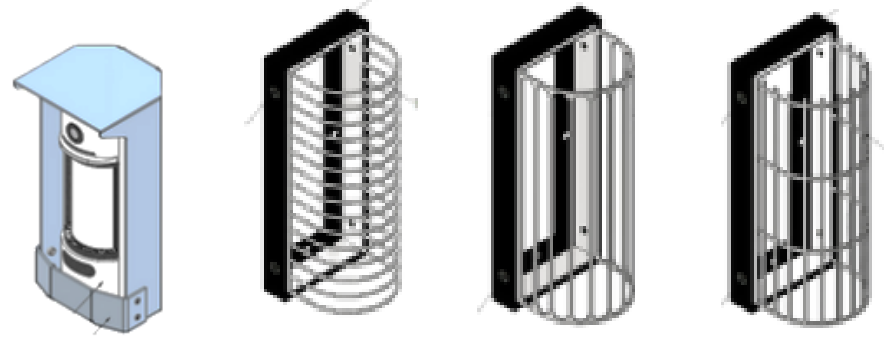
ANPR & LPR POSTS



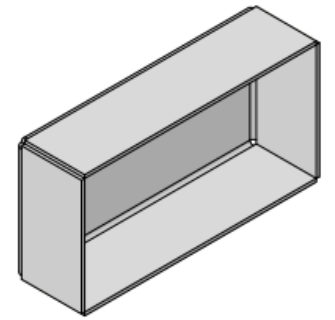
Brackets



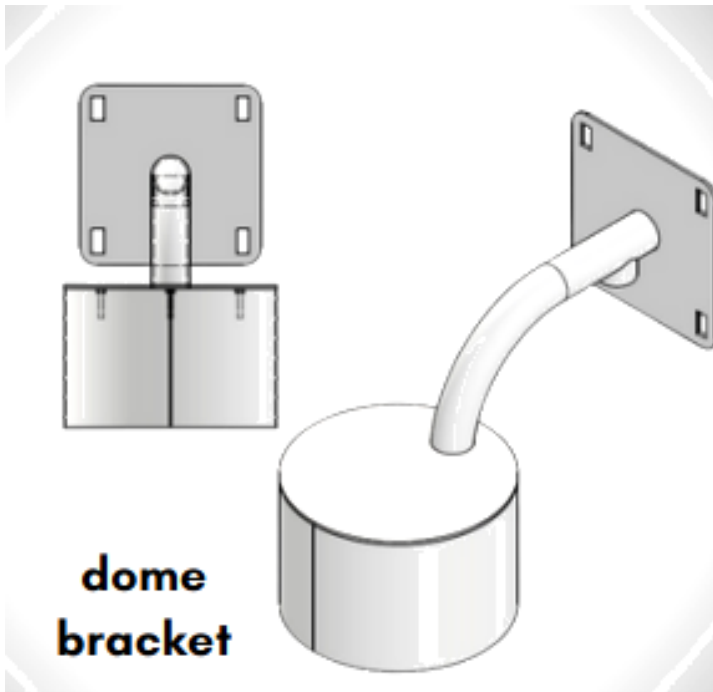
MOUNTING BRACKET



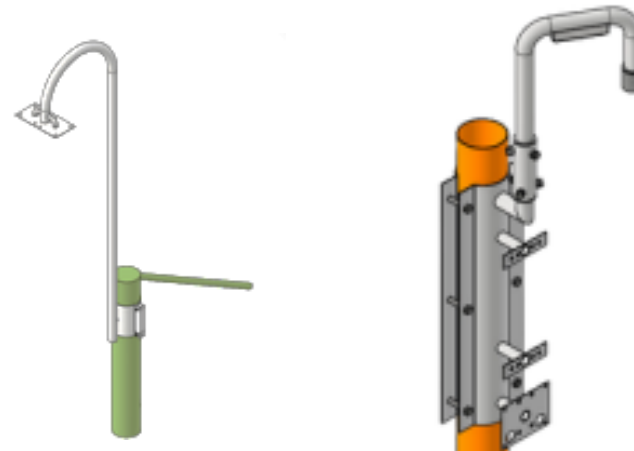
PASSIVE SECURITY BRACKET



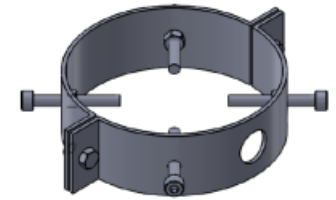
MOUNTING
BRACKET



DOME BRACKET



RETROFIT BRACKET



RETRO FIT POLE
BRACKET

SOLAR POSTS



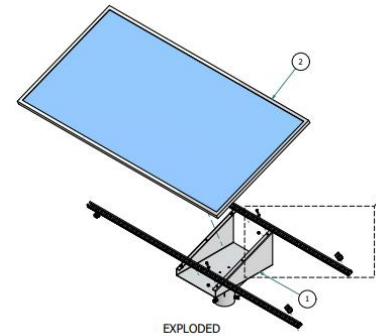
HEAVY DUTY SOLAR POST



ROOF MOUNT SOLAR BRACKET



POLE MOUNT SOLAR BRACKET



SOLAR BRACKET SINGLE

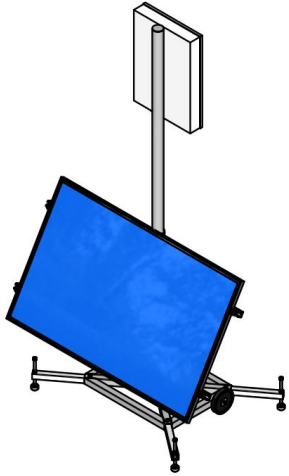
QUICK DEPLOY TRAILER



A - Frame
Solar Panel 3 x 435w
6m Manual Mast With Protect Cover
Single Axle Trailer Mechanical Brake
Camera Box Prewired
Victron Remote Monitoring System
Natis Registration



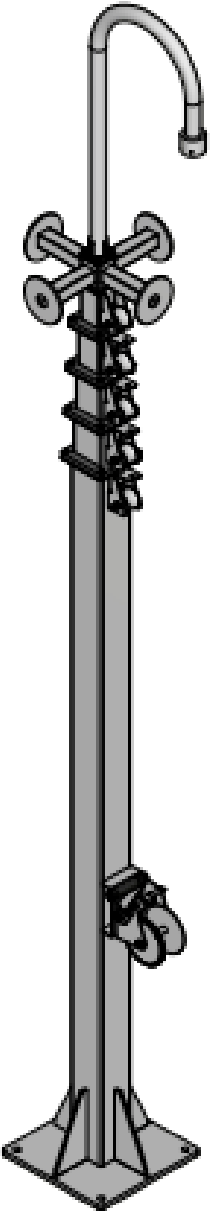
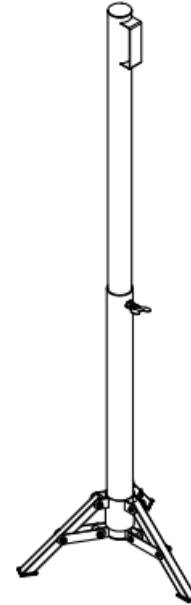
QUICK DEPLOY POSTS



SPEED DETECTOR

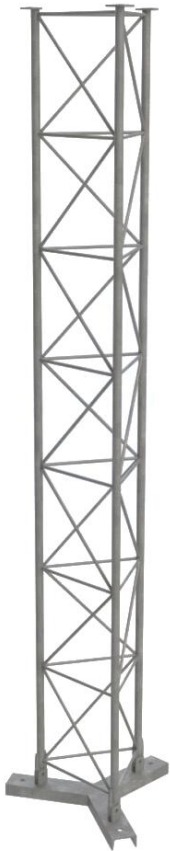


TELESCOPIC CAM
MOUNT



TELESCOPIC MAST

LATTICE MAST



SPECIFICATIONS

SIZES 6 000 TO 25 000

38MM TO TUBE WITH 8MM K-SECTIONS

MODULAR 2000MM & 3000MM SECTIONS

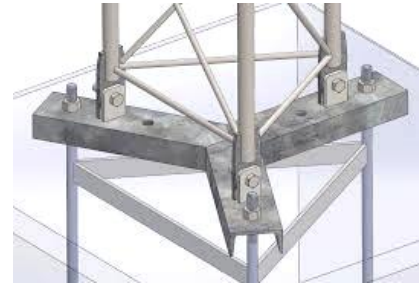
SECURI-BOLT ASSEMBLY WITH CABLE STAYS

12MM TFC CHANNEL BASE

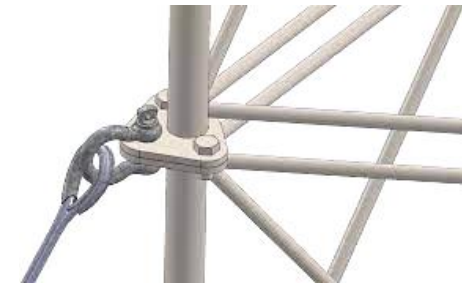
COMPLETE WITH TRIANGLE BOLT CAGE

6MM CABLE STAYS WITH SHACKLE MOUNT

CLIMABLE AT LADDER SECTION



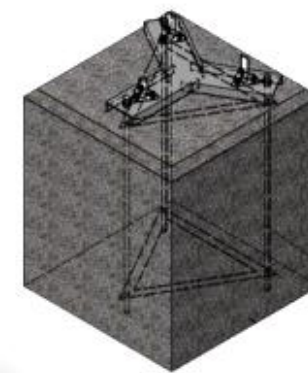
LATTICE MAST Y-BASE
ASSEMBLY



M16 SHACKLE FOR
CABLE STAYS

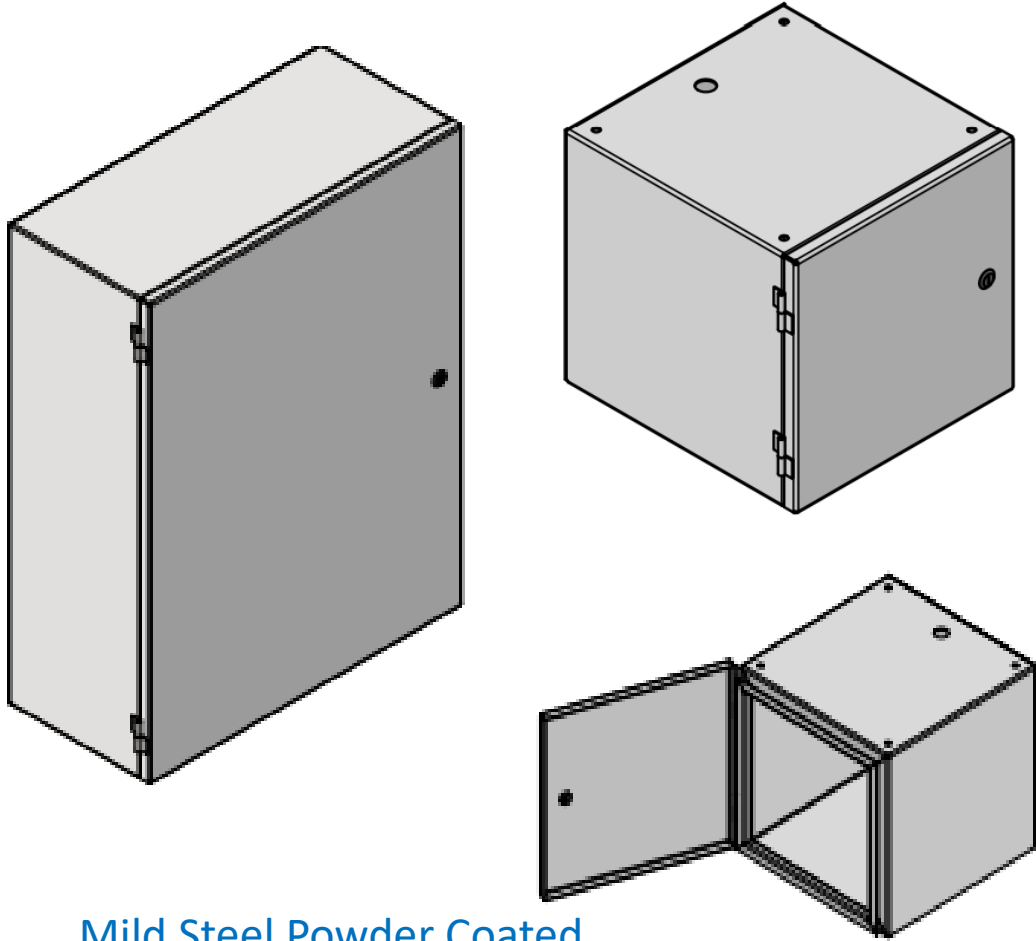


BOLT CAGE



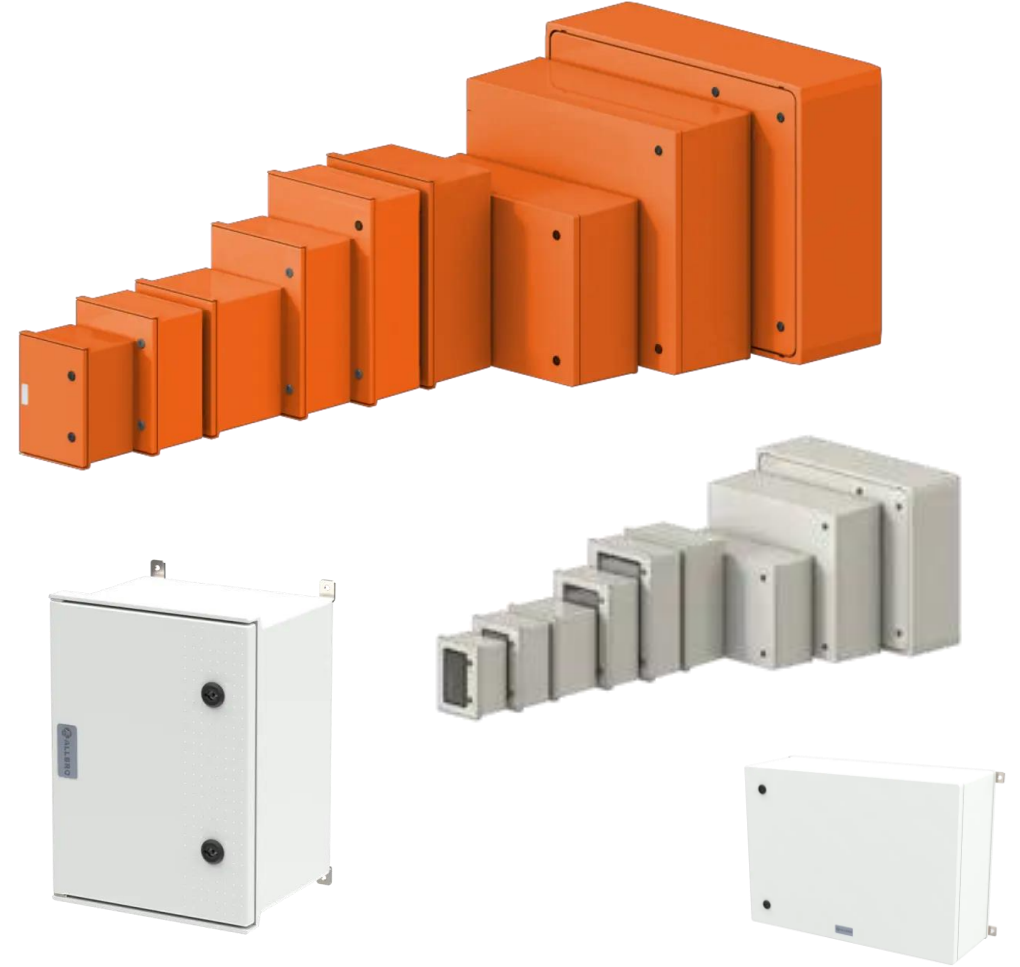
PLINTH DETAIL

CUSTOM ENCLOSURES



Mild Steel Powder Coated
Or
Stainless Steel

ALLBROX



- Material: GRP (Glass Reinforced Polyester, SMC (Sheet Moulding Compound)
- IP66 • IK10 • Non-corrosive • Non-conductive •
- Expected UV life: 25 years +

GUARD MASTER

CLEAR VIEW COLLECTION

At Guard Master, we believe in uncompromised security. As a family-run business, we are dedicated to providing innovative, reliable, and high-quality fencing solutions.

With years of experience, we've built a reputation for delivering durable systems that protect industrial, commercial, and high-security environments. From design to manufacturing, our independent approach ensures precision and craftsmanship in every product.

Guard Master is more than a name—it's our promise to safeguard what matters most to you, today and in the future.

VISTA MESH

APERTURE SPEC : 76MM X 100MM

LOW SECURITY MESH

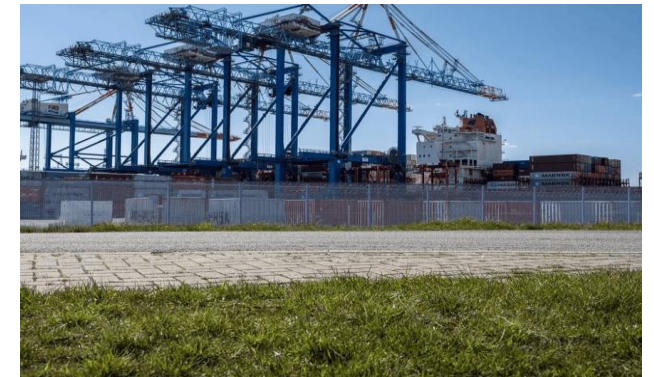
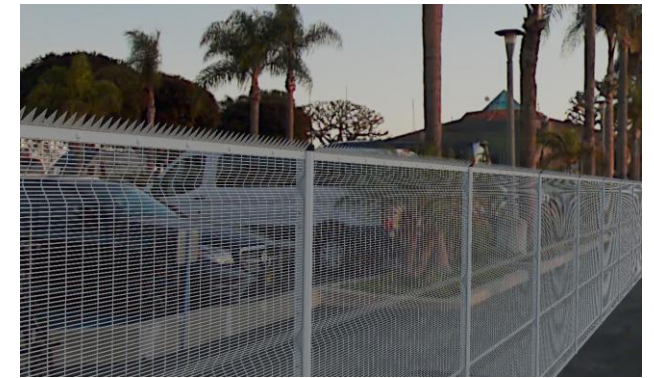
APERTURE SPEC : 76MM X 50MM

MEDIUM SECURITY MESH

APERTURE SPEC : 76MM X 25MM

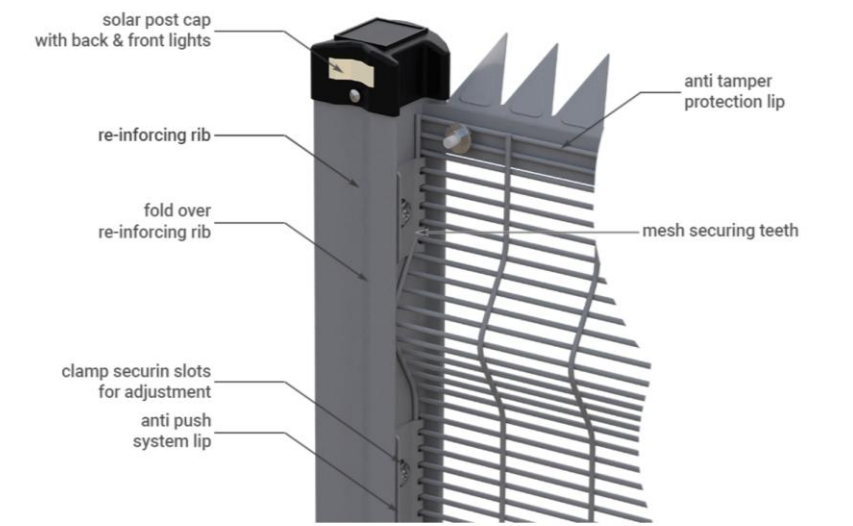
HIGH SECURITY MESH

APERTURE SPEC : 76MM X 12,7MM



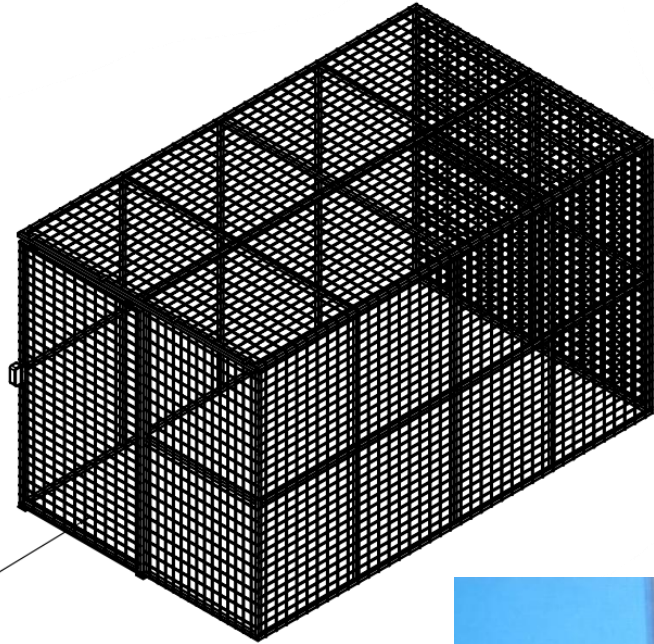
APERTURES SIZES / MESH OPENING:

PANEL TYPES	APERTURES	LENGTH (mm)	HEIGHT (mm)	RIGITY V-BENDS
High-Security (358 mesh)	76mm x 12.7mm	3000	1800	4
			2100	4
			2400	4
			3000	4
Medium Security	76mm x 25mm	3000	1800	4
			2100	4
			2400	4
			3000	4
Low-Security	76mm x 50mm	3000	1800	4
			2100	4
			2400	4
			3000	4



SPECIFICATION:	
Installation Height (mm)	1800, 2100, 2400, 3000
Embedded Post Height (mm) (600mm below the ground level)	2400, 2700, 3000, 3600
Post Center Distance (mm)	3000
Distance Between the Horizontal Wires (mm)	12.7 ± 1.0
Distance Between the Vertical Wires (mm)	76 ± 3.00
Core Diameter of the Horizontal Galvanized Wire (mm)	ø3.5 – ø5.6 ± 0.10
Core Diameter of the Vertical Galvanized Wire (mm)	ø3.5 – ø5.6 ± 0.10
Weld Strength	80% of parent material
Tensile Strength	500 – 650 MPA
Coating Options	Powder coating, Plascoat (anti-corrosion) finishes

CUSTOM WORK

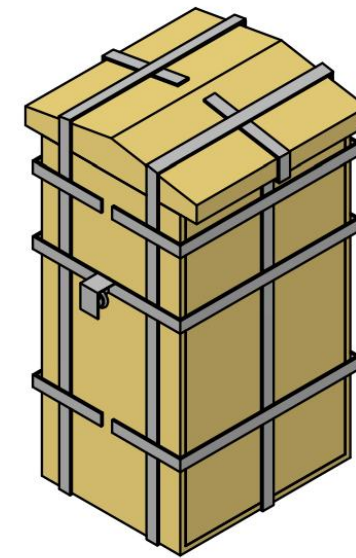


SLIDING GATE

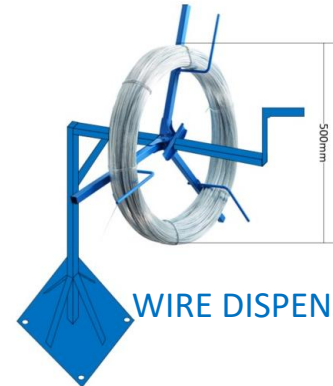
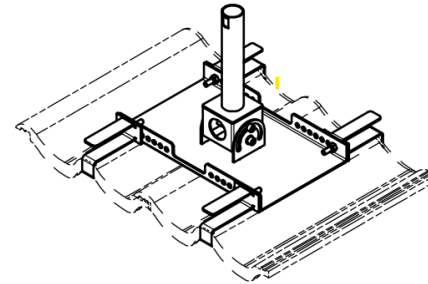
DATA CENTRE CAGE



SATELITE TILE ROOF BRACKET



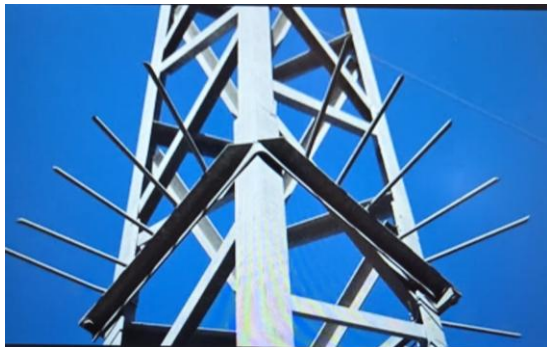
SUB STATION AND
ELECTRICAL BOX
STRAPPING



WIRE DISPENSER



PTZ ADAPTER



LATTICE MAST ANTI CLIMB
SPIKES



POLE ANTI CLIMB SPIKES

CONTACT: Santie Dyer
Santie@turnstar.co.za
Cell: 060 666 9121
Office: 011 786 1633